

Bioconcept

Dental Implant Systems

Benefit more people

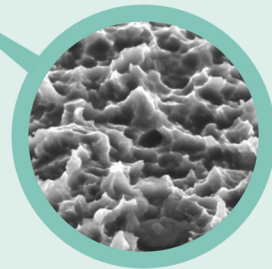
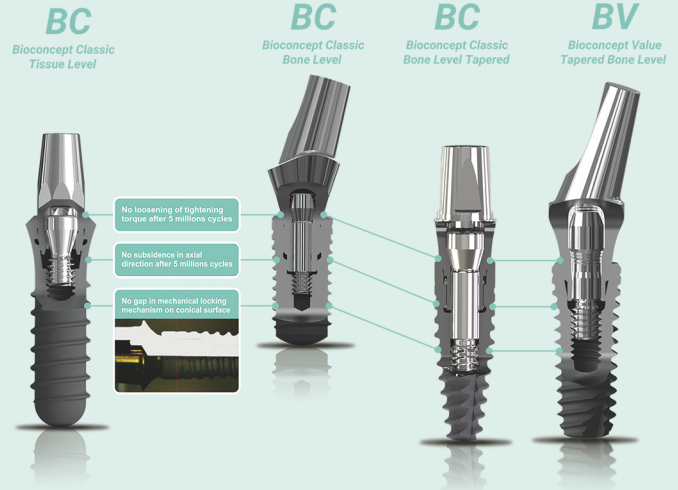


Leading Brand for Premium Dental Implants

Bioconcept is a world-class manufacturer of high quality, high-precision dental implants, prosthetics and surgical instruments for the global market. We offer two primary implant systems: Bioconcept Classic (BC) with Tissue Level (T-L), Bone Level (B-L), and Bone Level Tapered (B-L-T) implants, and Bioconcept Value (BV) with Tapered Bone Level implants. Bioconcept is the #1 domestic brand in China, as well as our products are sold in 60+ countries, including USA, Germany, Italy, France, Canada, and Australia.

We have fully integrated R&D, production, sales and service, and utilize only the highest-quality raw materials from leading global suppliers. Our senior management team averages 25+ years of medical expertise, previously having worked at leading MNCs, such as Johnson & Johnson, Medtronic, and Komatsu.

At Bioconcept our mission remains: **“Benefit more people”**



S-L-A

Surface Treatment

- Gold Standard of Surface Treatment
- Promotes bi-directional osseointegration
- Reduces the incidence rate of peri-implantitis

Bioconcept “At-a-Glance”

- Implanted over 1,000,000 across the world
- Our products are sold in 60+ countries
- 25,000 m² state-of-the-art production facilities
- 25+ years for senior management experience
- Premium ‘one-stop’ solutions since 2005

Key Product Features & Innovation

- Outstanding Surface Treatment with S.L.A
- Grade 4 Titanium and Highest Medical Grade Stainless Steel
- Best-in-Class Surgical Kits & Instruments
- Self-Retaining Performance
- No Loosening of Screw Structure
- Plug-in Carrier
- Bi-thread Center Screw

Multi-Unit Abutments



Equator Prosthetic System



CAD/CAM Abutments



Standard, Mini & Specialty Surgical Kits

Our Premium 'One-Stop' Solutions

Dental Implants

Bioconcept Classic (BC)

Key BC Features:

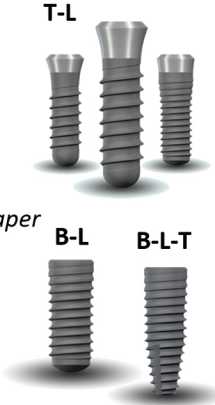
- ∅ (mm): 3.3 | 4.1 | 4.8
- L (mm): 6 | 8 | 10 | 12 | 14 | 16
- Ti Grade 4 (ZAPP) and S-L-A Surface

Tissue Level (T-L)

- Connection: Octagon 16° morse-taper
- Type: S, SP, TE (NN, RN, WN)

Bone Level (B-L) and Tapered (B-L-T)

- Connection: Cross (NC, RC)
- B-L-T: Apically at 0.8 mm pitch



Bioconcept Value (BV)

Key BV Features:

- ∅ (mm): 3.5 | 4.0 | 4.5 | 5.0 | 6.0 | 7.0
- L (mm): 7 | 8.5 | 10 | 11.5 | 13 | 15
- Ti Grade 4 (ZAPP) and S-L-A Surface

Tapered Bone Level

- Self-tapping, bi-thread extrusion
- Platform switching and open thread
- Connection: Hexagon, 11° morse-taper
- Plug-in patented carrier



Prosthetics

Full-Line of Prosthetic Solutions

Single Tooth

Multi-Units

Full Denture

Full Overdenture

BC: T-L

Solid | Minimal Height |
Octagonal (Straight & Angled) | Equator

BC: B-L/B-L-T

Anatomic | Meso | Multi-Function
(Straight & Angled) | Equator

BV:

Transfer | Angled | Multi-Function
(Straight & Angled) | Equator

Surgical Kits

Best-in-Class Surgical Kits & Instruments



Standard Kits



Mini Kits



Specialty Kits

- Implants
- Prosthetic
- Rescue
- Bone Expansion
- Bone Collector
- Sinus
- Osteo
- Surgery

Digital Solutions

CAD/CAM Ti-Customized



Pre-Milled Abutments

- BC
- BV
- Dentium
- Nobel
- ICX
- MG
- Astra

- Highest Accuracy Guaranteed
- Best Solution for Aesthetics and LT Stability

Tibase



- Indications:** Single | Multi-Fixation: Cement | Screw
- Workflow:** Traditional | Digital
- Implant System:** BC | BV
- Platforms:** NC | RC | RN | WN
- Spiral groove:** Straight

- Extended Prosthetics Solution
- Maximum Design Freedom

State-of-the-Art Production & QA/QC

In 2023, we opened our state-of-the-art 25,000 m² production facility in Changzhou, China, establishing one of the largest and most advanced facilities in the world

Annual Capacity: 800,000+ Implants
(Reaching 3.0 million by 2025)

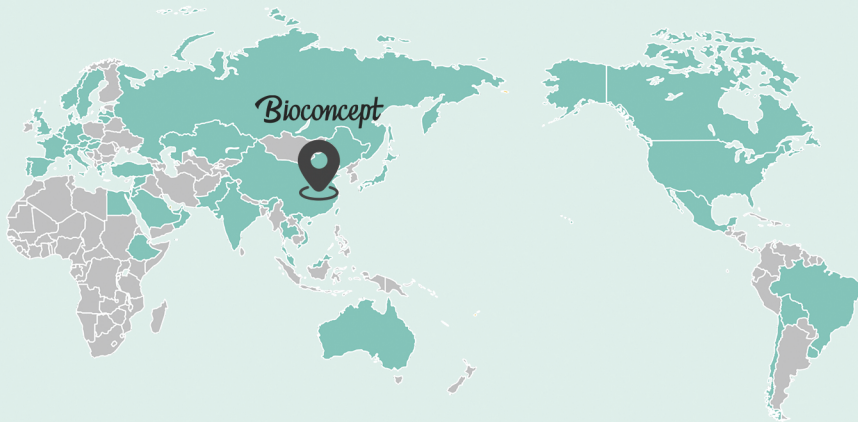
- Ⓑ 100+ Swiss machines operated continuously (reaching 250 by 2025)
- Ⓑ 1,500 m² clean workshop Class 8 and ISO 13485 certified
- Ⓑ Premier X-ray sterilization with Cobalt 60 irradiation systems
- Ⓑ World-class QA/QC (3D imaging, dynamic photocast, SEM, etc.)



Our Global Network

Bioconcept is recognized by customers across the globe for our highest-quality guaranteed products, our professional and timely service, and our in-person as well as online educational platforms

Our Products Are Sold In **More Than 60 Countries**



100+ sales and service team members



350+ courses; 4k+ dentists trained per year



70+ online trainings per year with 30k followers



30+ academic conferences per year



40+ global dental exhibitions per year

Contact Us

Web: www.bioconcept.cn
 Email: intlsales@bioconcept.cn
 Tel: +86-519-67895691
 Add: No. 26 Huashan Road, Xinbei District, Changzhou, Jiangsu, China 213022



Web